



Sunnyvale Community Services

Preventing Homelessness and Hunger in Our Local Community

People We Serve



SCS services are available to Sunnyvale residents. Our emergency assistance services are available to:

- Individuals
- Families
- Seniors

SCS provides services for homeless families and individuals through our outreach programs and collaboration with other community services providers.

How am I eligible?

1. Picture ID for all applicants over 18
2. Proof of Sunnyvale residency
3. Family members under 18 years old.
(Birth certificates or medical records)

** if sublease: affidavit of Sunnyvale residency*



Services and Programs





Programs

Weekly Produce
Monthly Food (MFP)
Children's Summer Nutrition
Homebound
Challenge Diabetes (CDP)
Diaper Distribution
Homeless & Housing Support
Nutrition Food Program
Backpack Day & Holiday Center
Case Management and Specialists
Partner Agencies

Monthly Food & Weekly Produce

Nutritious food and other essentials are offered to Sunnyvale residents who participate in our Monthly Food Program.



Produce. . . LOTS and LOTS of fruit and veggies are passed out to households

Children's Summer and Nutrition Food Programs



SCHOOL FOOD

- ★ We deliver food to 4 Sunnyvale elementary schools every Thursday & Friday for on-site distributions
- ★ Nearly 300 families receive groceries twice a month
- ★ We recently started delivering snacks to these elementary schools for their on-site pantries
- ★ We also deliver snacks to Fremont High school every other week for their student pantry

Homebound



For those clients who face difficulties getting to SCS, we deliver groceries to them twice a month.

We currently have 105 clients on Homebound and 30 regular volunteers that deliver.

For our most vulnerable clients, we deliver food every week.



- 114 diabetic or prediabetic clients participate in healthy eating & education
- An additional diabetic food bag is added to the MFP bag
- 9 month program with pre-screen & post screen events

Challenge Diabetes Program

Diaper Program



- SCS partners with a Bay Area non-profit, Help a Mother Out, who specializes in providing diapers to low income families.
- Each month we distribute 1 case of diapers to any child who needs them.
- In January we distributed diapers to 280 children.
- We also provide a bag of baby food & formula to any family who wants it.

Homeless & Housing Support



Our Homeless & Housing support area is now set up in its new location! We have supplies to help support our homeless clients like sleeping bags & clothing. We also have household items to help clients who have been housed.





NUTRITION CLASSES & DEMONSTRATION KITCHEN

- 6 week series
- Teaches healthy eating and demonstrates how to make healthier meals
- We are also working on a demonstration kitchen for our new site

Backpack DAY



Backpack Day is every August. Brand new backpacks, school supplies and gift cards are passed to over 1,600 kids so that they can start the school right.

Requirements:

Must be certified

K-12th Grade

Community Holiday Center



Every Holiday season our busy warehouse turns into a virtual North Pole with new toys, gifts, and food for Sunnyvale Families and Seniors.

Partner Agencies

** Please visit our website for updates during shelter in place:
www.svcommunityservices.org*



Valley Transportation Authority

SCS has a contract with VTA and Santa Clara County Social Services to sale Monthly VTA bus passes at a reduced price of \$25.00 per pass (Adults/Youth)

Caseworkers sell VTA passes to active SCS Food Program Card Holders around the 15th of every month on a “first come first serve basis” until passes are sold out.

Number of passes per household will be determined by a caseworker.

301 passes are sold out within less than a week of them going on sale.



Downtown Streets Team- Sunnyvale

A Caseworker attends monthly DST meetings to provide immediate assistance and/or referrals for DST Clients.

DST is one of the only programs at SCS where clients are not required to live in Sunnyvale.

Clients interested in job search assistance are referred from SCS to DST.



SALA: Senior Adult Legal Assistance Project Sentinel (Housing) PARS Equality Immigration Services



SALA
Senior Adults Legal Assistance

SALA: provides free legal services the 2nd and 4th Thursday of the month at SCS. To utilize SALA services client must be a SCC resident and 60 or older. SCS SALA dates are scheduled by

Project Sentinel:



Legal assistance for landlord/ tenants and more

PARS Equality:

Once a month free 1-on-1 consultations for legal immigration assistance



Public Benefits CalFresh & CalWorks



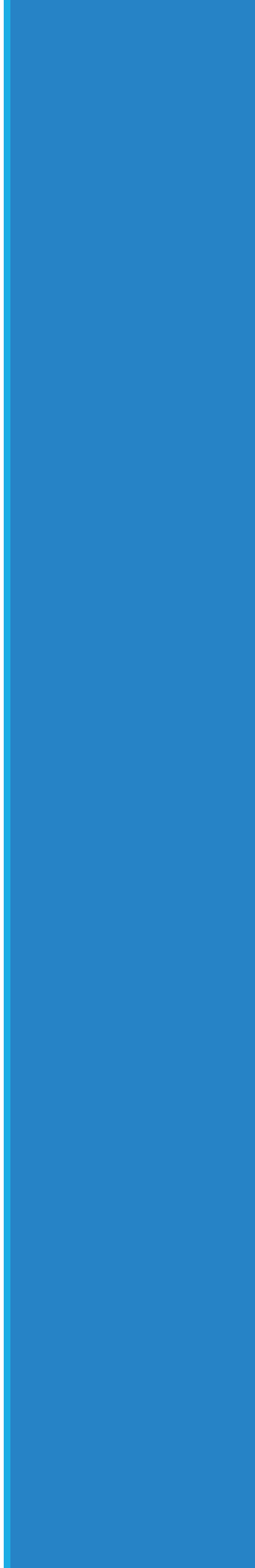
SANTA CLARA COUNTY
SOCIAL SERVICES AGENCY



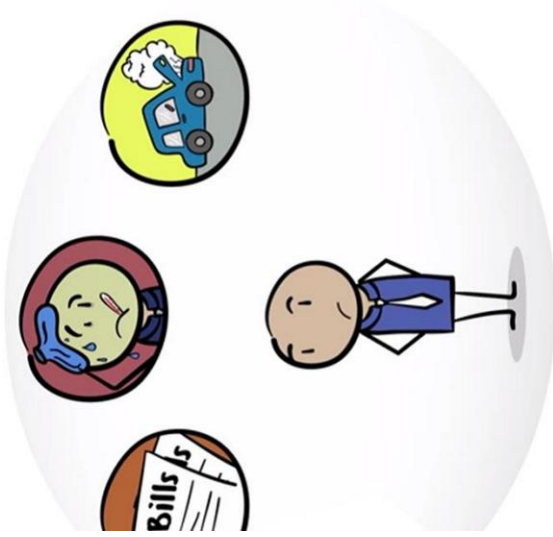
CALFRESH SHFB: A representative from Second Harvest Food Bank is available every Monday from 9am-11:30am & 1-4pm unless noted otherwise to promote accessibility to the Cal fresh (food stamp) Program. This representative is available to assist in the Cal Fresh Application Process and determine eligibility. This is open to both registered and non- registered clients.

Social Services of SCC: A Santa Clara County social worker is available to meet with clients on Mondays from 9am-4pm unless otherwise noted. This social worker is available via walk-in to answer questions about Cal Fresh, Medi-cal or other social services programs.

Homeless Prevention Programs



Emergency Financial Assistance and Housing Assistance



One-time financial assistance includes help with rent, rental deposits, utilities, and medical bills

ONLY SUNNYVALE & ALVISO

Caseworkers, Case Managers, and Specialists

Caseworkers vs. Specialized Services

Case Managers and Specialists

What is case management at SCS?

- Client-driven support services
- Promotes Self Sufficiency, Dignity, and Justice
- Holistic focus, or "whole person" / "whole family"
- Advocating, Coordinating, and Facilitating

Who we serve: Individuals and Families - "Households"



Destination Home Case Management



Individuals and Families who live in Sunnyvale are screened using an assessment tool if they qualify, they are referred to Destination Home Case Management

Destination Home is a 3-month Homelessness Prevention case management program

Destination Home helps households maintain their current housing or if needed find new appropriate housing

Destination Home can help meet households needs in addition to housing such as child care, vehicle insurance, and others

El Camino Case management



Clients are screened by case workers to determine if they meet criteria

El Camino Case Management is a 3-month Case Management Program

Whole Person Focused Case Management

This program targets seniors and those who are medically frail

Homebound case management is offered to clients who are experiencing limited mobility

Self-Sufficiency Programs



Rapid Rehousing (RRH) Case Management



What is Rapid Rehousing?

RRH primary focus is to assist client households in locating and securing safe and stable housing

Short- and long-term programs

Up to 2 years of monthly rental assistance and CM supports

Based on need and eligibility

CM support services include goal setting and planning, budgeting, and accessing other needed services and resources in the community

External service providers help clients address essential stability and self-sufficiency needs

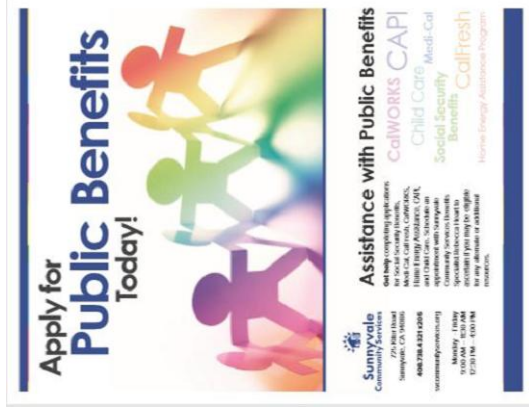
Examples: housing, employment, transportation, legal issues, immigration, education and healthcare

Housing Resource



- * housing search
- * Landlord mediator
- * assistance with apartment applications

Benefits Specialist



Apply for Public Benefits Today!

Get help completing applications for:

- Medicaid
- Medi-Cal
- CalWORKS
- Child Care
- Social Security
- CalFresh

For more information, call 408.778.4321 x308

Sunnyvale Community Services
 775 Olive Road
 Sunnyvale, CA 94086
 408.778.4321 x308

Monday - Friday
 9:00 AM - 5:00 PM
 6720 PM - 4:00 PM



Get help with your PG&E bill today!

REACH PROGRAM

If you have received a 15-day or 48-hour termination notice, or your service is off, you may be eligible to get a maximum credit of \$300 towards your PG&E bill.

Sunnyvale Community Services
 775 Olive Road
 Sunnyvale, CA 94086
 408.778.4321 x308

Schedule an appointment with Sunnyvale Community Services Benefits Specialist **Rebecca Heart** to determine your eligibility.

Monday - Friday
 9:00 AM - 5:00 PM
 6720 PM - 4:00 PM

Caseworkers and Case Managers are both able to refer clients to Benefit Specialist

Engages with all 4 Title I Elementary school distributions/available to meet with clients at the schools

SOAR certified to complete SSDI applications for homeless individuals

Is trained to assist client to apply for CalFresh, CalWORKs, Medi-Cal, Social Security Benefits, G.A., WIC, REACH and other public benefits

Community Leader Promotorx de la Comunidad Program



The Community Navigator Program is designed to engage local community members and bring awareness to the unmet needs of Sunnyvale residents. As a Community Leader you will serve as a liaison between your community and Sunnyvale Community Services. Community Leaders will receive ongoing training to acquire knowledge in order to educate individuals on local services and programs such as social services, healthcare, education, immigration and affordable housing in Santa Clara County.

Community Collaborations



Public Charge

Free Immigration Clinics

Know Your Rights Workshops

Housing & Tenants Rights

LGBTQ+A Workers Rights

Fee Waivers for Youth Activities

SCS Programs

Outreach & Services Providers



Our Daily Bread

Homebound Deliveries (Seniors/Disable)

Cold Weather Shelter

Columbia Family Night

Texas Instruments

School Distributions

Synagogues and Churches

Senior Center

Downtown Streets Team

Tittle I Schools

Office Hours



- **MAIN OFFICE: Sunnyvale Community Services**
Monday-Friday 9:00am-11:30am & 12:30pm-4:00pm
- **St. Cyprian Church**
Every 2nd & 4th Sunday 9:00am – 1:00pm
- **Columbia Neighborhood Center**
Wednesdays 1:00pm-5:00pm
- **Sunnyvale Senior Center**
Wednesdays 8:30am-12:00pm
- **Our Daily Bread (St. Episcopal Church)**
M/W/F: 11:00am-12:30pm

* Please visit our website for updates during shelter in place:
www.svcommunityservices.org